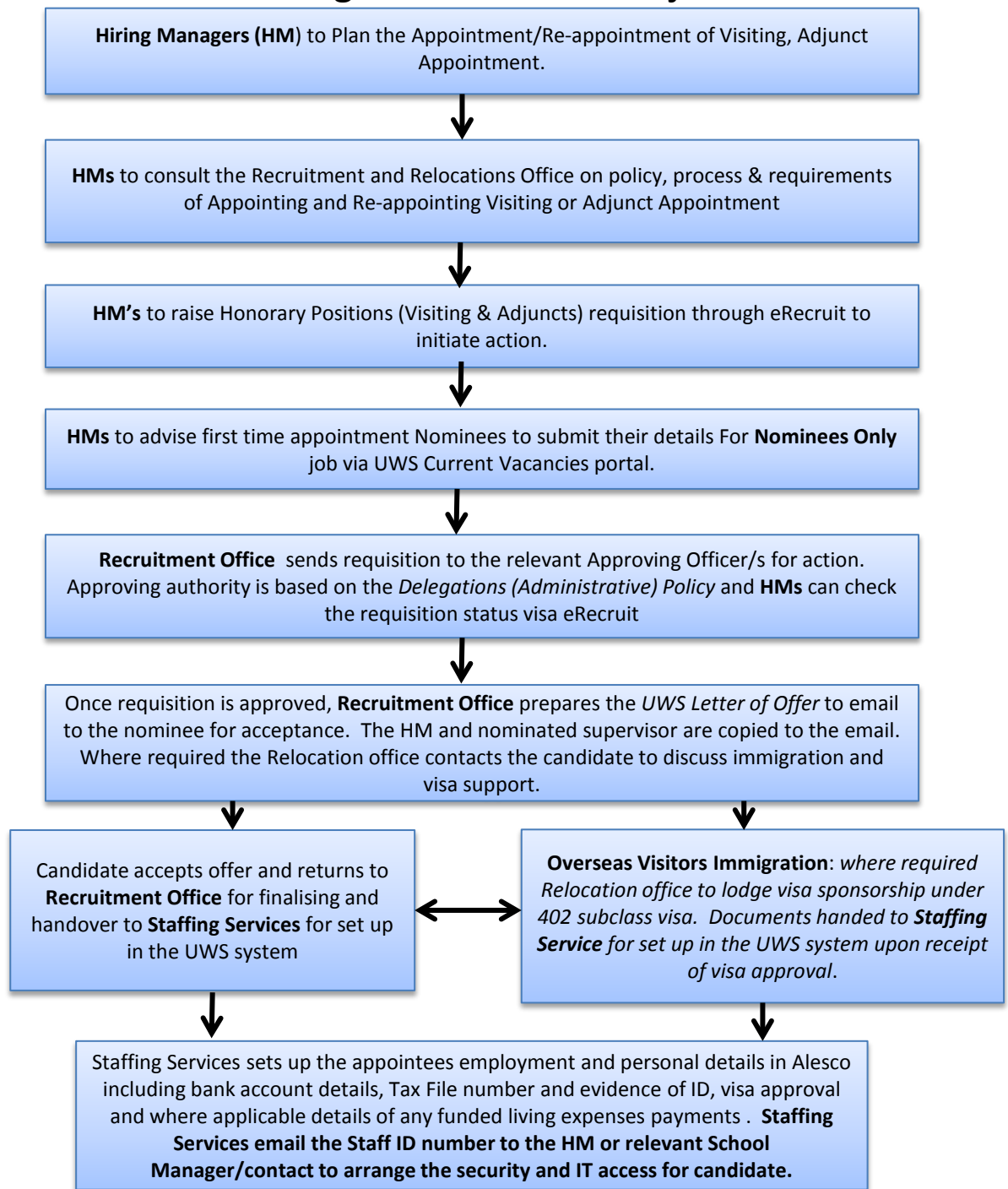


Recruitment Flow Chart for Visiting Academics and Adjunct



FORGEIN NATIONALS – OVERSEAS VISITORS

* If the Nominee will receive an expense contribution, refer to Part E - Payment of Contributions & Other Benefits, Clauses 53-57 of the Visiting & Adjunct Appointments Policy. The Living Allowance Rate Schedule is found on the appendix of this Policy. If the rate is above the Scheduled Rate, DVC approval is required. <http://policies.uws.edu.au/view.current.php?id=00004>